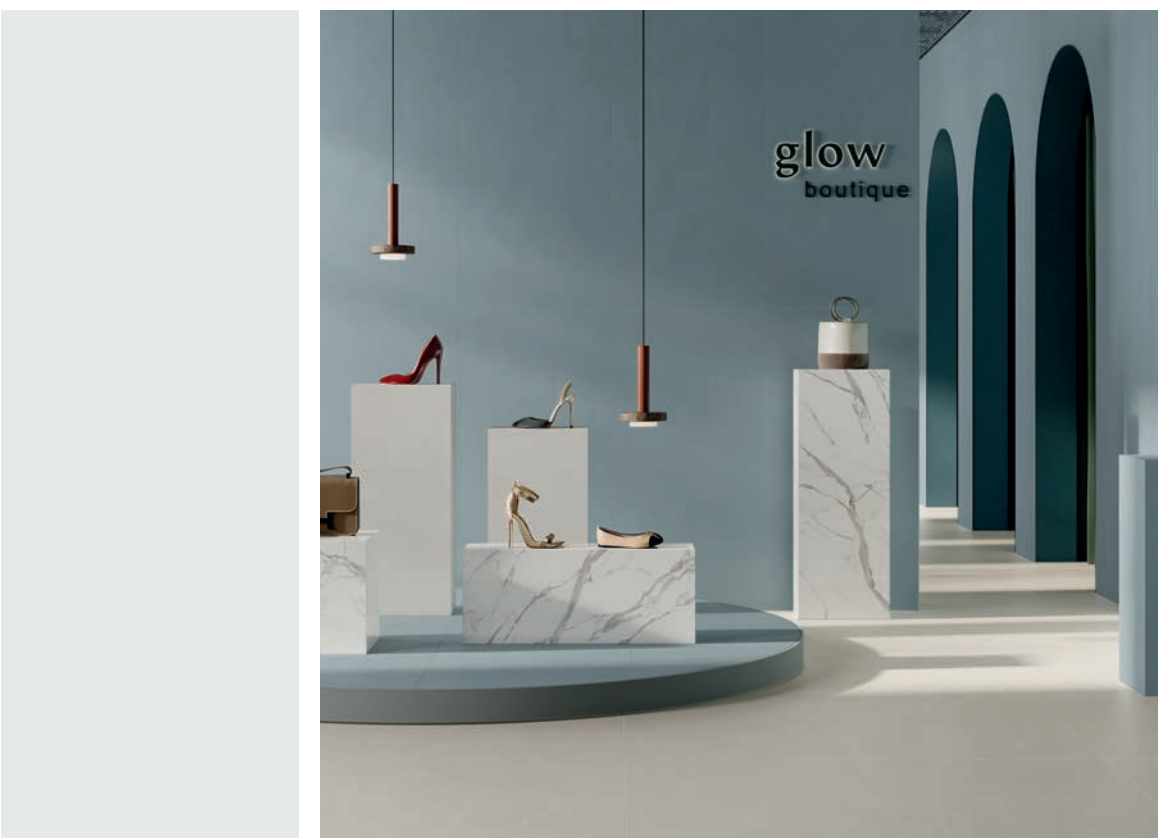


**LA
FABBRICA
AVA**
EXTRAORDINARY TILES



FALL/WINTER 2023



Innovativa e di tendenza nel mondo dell'interior design, **Le Malte** interpreta la **resina** nei suoi aspetti estetici più autentici.

Giochi di luce disegnano una **struttura morbida dall'effetto spatolato**, rendendola unica, che assieme alle **tinte piene** e ai **grandi formanti**, ricreano quella **continuità visiva** e ampiezza di spazio tipiche della materia ispiratrice.

Descrivono la serie una gamma di colori delicati e pastello, toni neutri ed accenti verdi e azzurri, pensati per abbinamenti impeccabili con le altre serie LA FABBRICA AVA.

Gli spazi si fanno tela su cui dare libero sfogo a diverse soluzioni creative, per ridisegnare i contorni dell'abitare in chiave minimalista e contemporanea ma al contempo ricercata e sofisticata.

Innovative and on-trend in the world of interior design, **Le Malte** interprets resin in its most authentic aesthetic aspects. Light games craft a **soft and spatulated texture**, making it truly unique. Combined with **solid hues and large formats**, these elements recreate the typical **visual continuity** and sense of space inspired by the material.

The series is characterized by a range of **delicate and pastel colors**, neutral tones, and hints of green and blue, designed for seamless combinations with other LA FABBRICA AVA collections.

Spaces become a canvas for various unleashed creative solutions, which allows to redesign living spaces with a minimalist and contemporary yet refined and sophisticated touch.

GREY

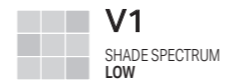
TAUPE

BEIGE

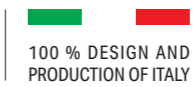
IVORY

SAGE

AVIO



ISO 13006 - G - Bla_E ≤ 0,5% - UNI EN 14411 - GL

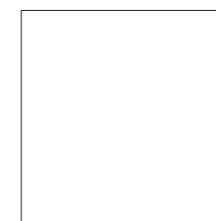


LE MALTE
MATERICO

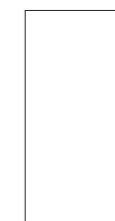
6 mm Lastre in gres porcellanato pressate a secco.
Dry-pressed porcelain stoneware slabs



120x280
48"x110"
Nat Ret



120x120
48"x48"
Nat Ret



60x120
24"x48"
Nat Ret

8,8 mm R10B Gres porcellanato colorato in massa.
Colored body porcelain stoneware

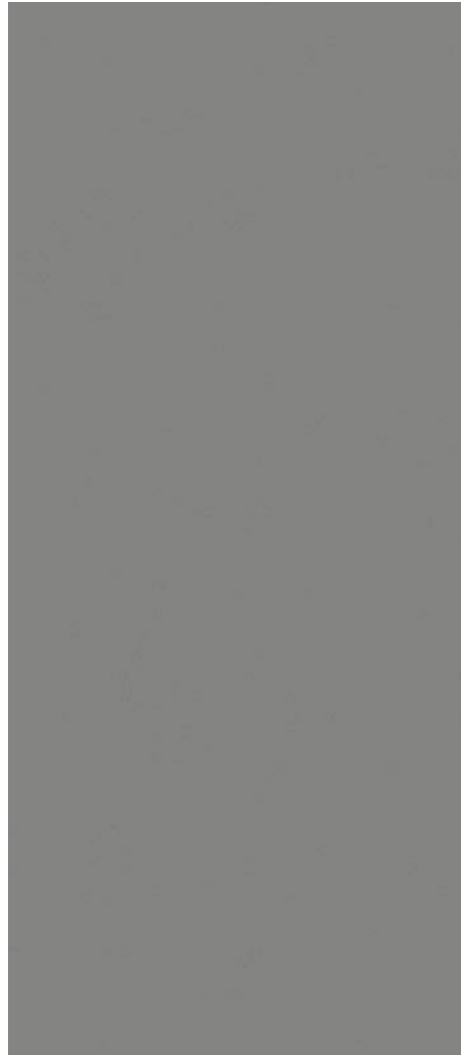


Ivory
Beige
Grey
Taupe

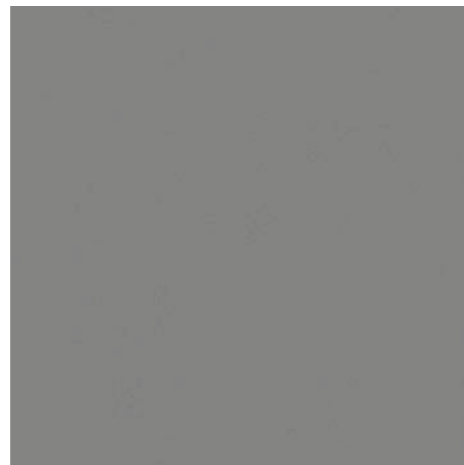
80x80
31 1/2"x31 1/2"
Nat Ret

Grey

6 mm Lastre in gres porcellanato pressate a secco.
Dry-pressed porcelain stoneware slabs



120x280_48"x110"
198003 Nat Ret

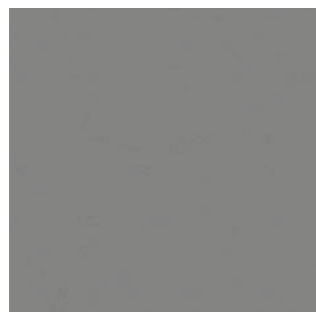


120x120_48"x48"
198013 Nat Ret



60x120_24"x48"
198023 Nat Ret

8,8 mm R10B Gres porcellanato colorato in massa.
Colored body porcelain stoneware



80x80_31 1/2"x31 1/2"
198033 Nat Ret



Floor
GREY 120x120_48"x48" Nat Ret

Wall
GREY 120x280_48"x110" Nat Ret
UP AVANA - AVANA CUSCINO 5x25_2"x10" Matte

GREY



TAUPE

Wall
TAUPE 60x120_24"x48" Nat Ret
BOLGHERI STONE SAGE 120x280_48"x110" Lap Ret

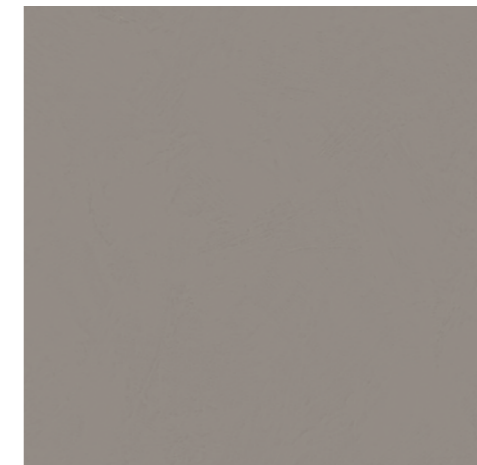
Floor
TAUPE 120x120_48"x48" Nat Ret

Taupe

6 mm Lastre in gres porcellanato pressate a secco.
 Dry-pressed porcelain stoneware slabs



120x280_48"x110"
198005 Nat Ret

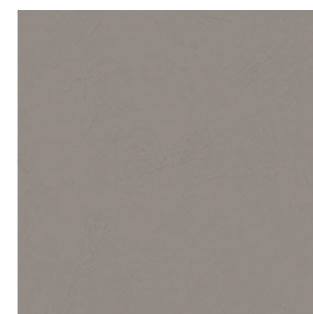


120x120_48"x48"
198015 Nat Ret



60x120_24"x48"
198025 Nat Ret

8,8 mm **R10B** Gres porcellanato colorato in massa.
 Colored body porcelain stoneware



80x80_31 1/2"x31 1/2"
198035 Nat Ret

Beige

6 mm Lastre in gres porcellanato pressate a secco.
Dry-pressed porcelain stoneware slabs



120x280_48"x110"
198004 Nat Ret



120x120_48"x48"
198014 Nat Ret



60x120_24"x48"
198024 Nat Ret

8,8 mm R10B Gres porcellanato colorato in massa.
Colored body porcelain stoneware



80x80_31 1/2"x31 1/2"
198034 Nat Ret



BEIGE

Wall
IMAGINE JUNGLE CHIC 120x280_48"x110" Nat Ret

Floor
BEIGE 120x120_48"x48" Nat Ret



Wall
IMAGINE JUNGLE CHIC 120x280_48"x110" Nat Ret
SAGE 60x120_24"x48" Nat Ret

Floor
BEIGE 120x120_48"x48" Nat Ret

Ivory

6 mm Lastre in gres porcellanato pressate a secco.
Dry-pressed porcelain stoneware slabs



120x280_48"x110"
198002 Nat Ret



120x120_48"x48"
198012 Nat Ret



60x120_24"x48"
198022 Nat Ret

8,8 mm **R10B** Gres porcellanato colorato in massa.
Colored body porcelain stoneware



80x80_31 1/2"x31 1/2"
198032 Nat Ret



IVORY

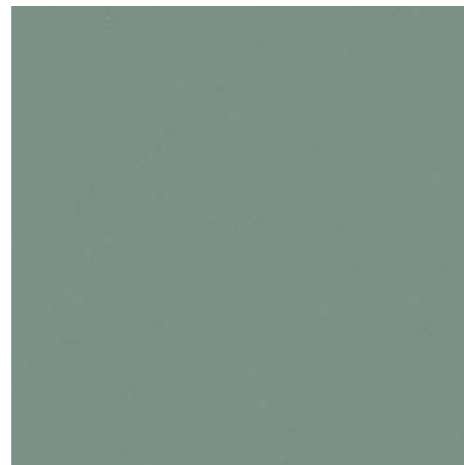
Furniture **BOLGHERI STONE SAGE** Lap Ret
Floor **IVORY 120x120_48"x48"** Nat Ret
Wall **IVORY 120x280_48"x110"** Nat Ret
BOLGHERI STONE SAGE 120x280_48"x110" Lap Ret

Sage

6 mm Lastre in gres porcellanato pressate a secco.
Dry-pressed porcelain stoneware slabs



120x280_48"x110"
198006 Nat Ret



120x120_48"x48"
198016 Nat Ret



60x120_24"x48"
198026 Nat Ret

8,8 mm R10B Gres porcellanato colorato in massa.
Colored body porcelain stoneware



80x80_31 1/2"x31 1/2"
198036 Nat Ret



SAGE

Wall
SAGE 120x280_48"x110" Nat Ret

Counter
STATUARIO REALE Lap

Floor
IVORY 120x120_48"x48" Nat Ret



AVIO

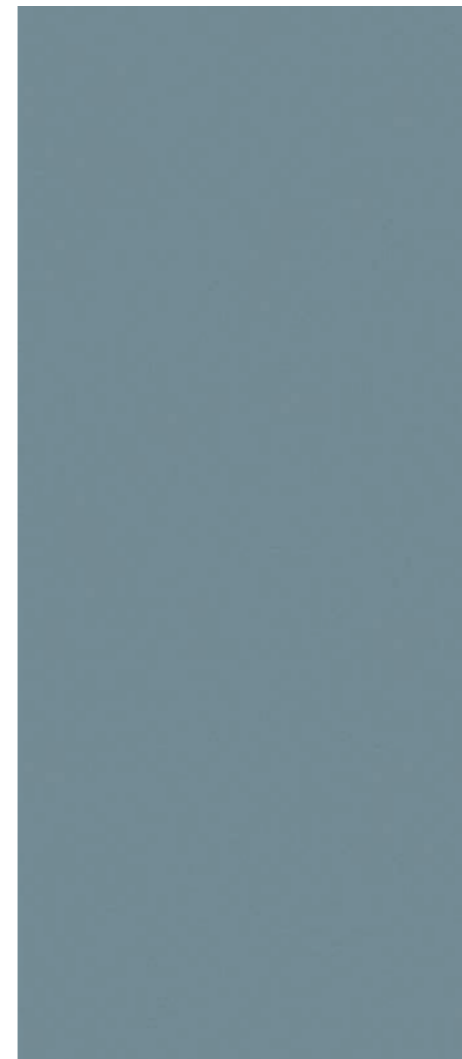
Wall
AVIO 60x120_24"x48" Nat Ret

Furniture
STATUARIO REALE Lap
IVORY Nat Ret

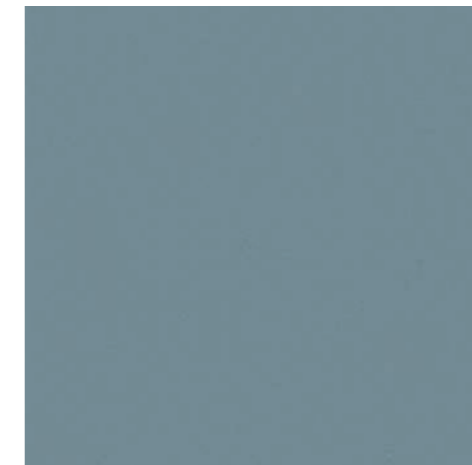
Floor
AVIO 60x120_24"x48" Nat Ret
IVORY 120x120_48"x48" Nat Ret

Avio

6 mm Lastre in gres porcellanato pressate a secco.
Dry-pressed porcelain stoneware slabs



120x280_48"x110"
198001 Nat Ret



120x120_48"x48"
198011 Nat Ret



60x120_24"x48"
198021 Nat Ret

8,8 mm R10B Gres porcellanato colorato in massa.
Colored body porcelain stoneware



80x80_31 1/2"x31 1/2"
198031 Nat Ret

LE MALTE

MATERICO

6 mm				8,8 mm	
	120x280 48"x110"	120x120 48"x48"	60x120 24"x48"	80x80 31 1/2"x31 1/2"	
	Nat Ret			Nat Ret	
GREY	198003	198013	198023	GREY	198033
TAUPE	198005	198015	198025	TAUPE	198035
BEIGE	198004	198014	198024	BEIGE	198034
IVORY	198002	198012	198022	IVORY	198032
SAGE	198006	198016	198026	SAGE	198036
AVIO	198001	198011	198021	AVIO	198031
Price code	M153	M141	M118	Price code	M097

PEZZI SPECIALI . Trims

6 mm			
	33x120	33x120	
	Nat Ret		Nat Ret
GREY	198063	198083 SX	198093 DX
TAUPE	198065	198085 SX	198095 DX
BEIGE	198064	198084 SX	198094 DX
IVORY	198062	198082 SX	198092 DX
SAGE	198066	198086 SX	198096 DX
AVIO	198061	198081 SX	198091 DX
Price code	P243	P273	

8,8 mm			
	8x80	33x80	33x80
	Nat Ret		
GREY	198053	198073	198103 SX 198113 DX
TAUPE	198055	198075	198105 SX 198115 DX
BEIGE	198054	198074	198104 SX 198114 DX
IVORY	198052	198072	198102 SX 198112 DX
SAGE	198056	198076	198106 SX 198116 DX
AVIO	198051	198071	198101 SX 198111 DX
Price code	P029	P167	P179



Wall
TAUPE 60x120_24"x48" Nat Ret
BOLGHERI STONE SAGE 120x280_48"x110" Lap Ret

Floor
TAUPE 120x120_48"x48" Nat Ret

IMBALLI Packings

	PCS/BOX	MQ/BOX	KG/BOX	PCS/PAL	BOX/PAL	MQ/PAL	KG/PAL	PACKING	PACKING SIZE	TARE (KG)
6 mm										
120x280	-	-	-	20	-	67,20	974	CASSA	291 x 136 x 40h	108
	-	-	-	44	-	147,84	2205	CAVALLETTO LEGNO	290 x 75 x 161h	145
120x120	2	2,88	41,76	48	24	69,12	1002	PALLET SPECIALE	122 x 137 x 74h	29
	-	-	-	88	-	126,72	1838	CAVALLETTO LEGNO	250 x 75 x 161h	132
60 x 120	2	1,44	21	-	40	57,60	840	EPAL	80 x 120 x 75h	22
8,8 mm										
80 x 80	2	1,28	23,2	-	50	64	1.159	EPAL	80 x 120 x 95h	22

PEZZI SPECIALI. TRIMS	PCS/BOX	MQ/BOX	KG/BOX	PACKING	PACKING SIZE	TARE (KG)
6 mm						
BATTISCOPA 7 x 60	15	0,63	13,28	EPAL	80 x 120	22
GRADINO COSTA RETTA 33 x 120 x 3,2h **	2	-	14	EPAL	80 x 120	22
GRADINO COSTA RETTA 33 x 120 x 3,2h SX/DX **	1	-	7	EPAL	80 x 120	22
8,8 mm						
BATTISCOPA 8 x 80	10	-	15,00	EPAL	80 x 120	22
GRADINO COSTA RETTA 33 x 80 x 3,2h **	2	-	16	EPAL	80 x 120	22
GRADINO COSTA RETTA 33 x 80 x 3,2h SX/DX **	1	-	8,50	EPAL	80 x 120	22

** A disposizione solo su richiesta.
 Tempi di consegna: 30gg
 Available upon request only.
 Delivery terms: 30 days



Cavalletto in legno
 Wood A-Frame



Cassa
 Crate



Epal



Pallet speciale
 con sponde
 Special pallet
 with sides

CARATTERISTICHE TECNICHE

Technical features

NOBLE STONE, LE MALTE,
BOLGHERI STONE, HONEY WOOD

LASTRE IN GRES PORCELLANATO PRESSATE A SECCO.

Dry-pressed porcelain stoneware slabs.

Classificazione secondo UNI EN 14411-ISO 13006 - G - Bla (E ≤ 0,5%) GL

Product in compliance with UNI EN 14411-ISO 13006 - G - Bla (E ≤ 0,5%) GL

CARATTERISTICA SPECIFICATION CARACTERISTIQUE EIGENSCHAFT	METODO DI PROVA TEST METHODS METHODE D'ESSAI TESTVERFAHREN	VALORE PRESCRITTO FIXED VALUE VALEUR PRESCRITE VORGESCHRIEBENER WERT	
CARATTERISTICHE DIMENSIONALI DIMENSIONS AND SURFACE QUALITY DIMENSIONS DIMENSIONALE EIGENSCHAFTEN	ISO 10545-2	LUNGHEZZA E LARGHEZZA LENGTH AND WIDTH. LONGUEUR ET LARGEUR. LÄNGE UND BREITE	±0.6% or ±2mm
		SPESSORE THICKNESS. EPAISSEUR. STÄRKE	±5%
		RETTILINEITÀ STRAIGHTNESS OF SIDES. RECTITUDE DES BORDS RECHTECKIGKEIT DER ECKEN	±0.5%
		ORTOGONALITÀ, RECTANGULARITY. ORTHOGONALITÉ. RECHTWINKLIGKEIT	±0.5%
		PLANARITÀ SURFACE FLATNESS. PLANEITUDE EBENFLÄCHIGKEIT	±0.5%
CONFORME COMPLIANT CONFORME ERFÜLLT			
ASSORBIMENTO D'ACQUA WATER ABSORPTION ABSORPTION D'EAU WASSERAUFNAHME	ISO 10545-3	≤ 0,5 %	CONFORME COMPLIANT CONFORME ERFÜLLT
RESISTENZA ALLA FLESSIONE BREAKING MODULUS RESISTANCE A LA FLEXION BIEGEFESTIGKEIT	ISO 10545-4	≥ 35 N/mm ²	CONFORME COMPLIANT CONFORME ERFÜLLT
SFORZO DI ROTTURA MODULUS OF RUPTURE CHARGE DE RUPTURE BRUCHLAST	ISO 10545-4	≥ 7,5 mm = ≥ 1300 N < 7,5 mm = ≥ 700 N	CONFORME COMPLIANT CONFORME ERFÜLLT
RESISTENZA ALLA ABRASIONE PROFONDA DEEP ABRASION RESISTANCE RESISTANCE A L'ABRASION PROFONDE BESTÄNDIGKEIT GEGEN TIEFENVERSCHLEISS	ISO 10545-6	≤ 175 mm ³	CONFORME COMPLIANT CONFORME ERFÜLLT
COEFFICIENTE DI DILATAZIONE TERMICA LINEARE THERMAL EXPANSION COEFFICIENT COEFFICIENT DE DILATATION THERMIQUE LINEAIRE WARMEAUSDEHNUNGSKOEFFIZIENT	ISO 10545-8	METODO DISPONIBILE AVAILABLE ON REQUEST METHODE DISPONIBLE VERFÜGBARES VERFAHREN	≤ 7x10 ⁻⁶ °C ⁻¹
RESISTENZA AGLI SBALZI TERMICI THERMAL SHOCK RESISTANCE RESISTANCE AUX ECARTS DE TEMPERATURE TEMPERATURWECHSELBESTÄNDIGKEIT	ISO 10545-9	METODO DISPONIBILE AVAILABLE ON REQUEST METHODE DISPONIBLE VERFÜGBARES VERFAHREN	RESISTENTI RESISTANT RÉSISTANTS WIDERSTANDSFAHIG
RESISTENZA AL GELO FROST RESISTANCE RESISTANCE AU GEL FROSTBESTÄNDIGKEIT	ISO 10545-12	RICHIESTA ALWAYS TESTED EXIGÉE NOTWENDIG	RESISTENTI RESISTANT RÉSISTANTS WIDERSTANDSFAHIG
RESISTENZA AI PRODOTTI CHIMICI CHEMICAL RESISTANCE RESISTANCE AUX PRODUITS CHIMIQUES CHEMISCHE BESTÄNDIGKEIT	ISO 10545-13	min. UB	RESISTENTI RESISTANT RÉSISTANTS WIDERSTANDSFAHIG
PRODOTTI CHIMICI AD USO DOMESTICO ED ADDITIVI PER PISCINA HOUSEHOLD CHEMICALS AND SWIMMING POOL WATER CLEANSERS PRODUITS CHIMIQUES COURANTS ET ADDITIFS POUR PISCINE CHEM. PRODUKTE FÜR DEN HAUSHALTSGEBRAUCH UND ZUSATZ FÜR SCHWIMMBÄDER			
ACIDI ED ALCALI A BASSA CONCENTRAZIONE ACIDS AND LOW CONCENTRATION ALKALIS ACIDES ET ALCALI A FAIBLE CONCENTRATION SÄUREN UND ALKALI IN GERINGER KONZENTRATION			
RESISTENZA ALLE MACCHIE STAIN RESISTANCE RESISTANCE AUX TACHES FLECKBESTÄNDIGKEIT	ISO 10545-14	METODO DISPONIBILE AVAILABLE ON REQUEST METHODE DISPONIBLE VERFÜGBARES VERFAHREN	RESISTENTI RESISTANT RÉSISTANTS WIDERSTANDSFAHIG
STABILITÀ DEI COLORI ALLA LUCE COLOUR STABILITY TO LIGHT STABILITÉ DES COULEURS A LA LUMIERE LICHTECHTHEIT DER FARBEN	DIN 51094	METODO DISPONIBILE AVAILABLE ON REQUEST METHODE DISPONIBLE VERFÜGBARES VERFAHREN	CONFORME COMPLIANT CONFORME ERFÜLLT
COEFFICIENTE DI ATTRITO (SCIVOLOSITÀ) FRICTION COEFFICIENT (SLIPPERINESS) COEFFICIENT DE FROTTEMENT (GLISSANCE) REIBUNGSKOEFFIZIENT (GLÄTTE)	ANSI A 326.3:2021	≥ 0,42	≥ 0,42 SUPERFICIE NATURALE NATURAL SURFACE

CERTIFICAZIONI DI PRODOTTO

Product certification



放射性水平 A 类



Tutte le piastrelle sono certificabili MOCA.
All the tiles can be MOCA-certified.
Toutes les carreaux sont certifiées MOCA.
Alle Bodenfliesen sind nach MOCA zertifizierbar.



CARATTERISTICHE TECNICHE

Technical features

NOBLE STONE, LE MALTE,
BOLGHERI STONE, HONEY WOOD

GRES PORCELLANATO COLORATO IN MASSA.

Colored body porcelain stoneware.

ISO 13006 - G - Bla (E ≤ 0,5%) UNI EN 14411 - GL -

CARATTERISTICA SPECIFICATION CARACTERISTIQUE EIGENSCHAFT	METODO DI PROVA TEST METHODS METHODE D'ESSAI TESTVERFAHREN	VALORE PRESCRITTO FIXED VALUE VALEUR PRESCRITE VORGESCHRIEBENER WERT			
CARATTERISTICHE DIMENSIONALI DIMENSIONAL CHARACTERISTICS DIMENSIONS DIMENSIONALE EIGENSCHAFTEN	ISO 10545-2	LUNGHEZZA E LARGHEZZA LENGTH AND WIDTH. LONGUEUR ET LARGEUR. LÄNGE UND BREITE	±0.6% X	CONFORME COMPLIANT CONFORME ERFÜLLT	RET LAP RET
		SPESSORE THICKNESS. EPAISSEUR. STÄRKE	±5%		
		RETTILINEITÀ DEGLI SPIGOLI STRAIGHTNESS OF EDGES RECTITUDE DES BORDS RECHTECKIGKEIT DER ECKEN	±0.5%		
		ORTOGONALITÀ, RECTANGULARITY. ORTHOGONALITÉ. RECHTWINKLIGKEIT	±0.5%		
		PLANARITÀ (CURVATURA DEL CENTRO - CURVATURA DELLO SPIGOLO SVERGOLAMENTO) PLANARITY (CURVATURE OF CENTRE - CURVATURE OF EDGE - WARTAGE) PLANARITE (COURBURE DU CENTRE - COURBURE DE L'ARÊTE - GAUCHISSEMENT) EBENHEIT (KRÜMMUNG DER MITTE - KRÜMMUNG DER KANTE - VERDREHUNG)	±0.5%		
QUALITÀ DELLA SUPERFICIE SURFACE QUALITY QUALITÉ DE LA SURFACE QUALITÄT DER OBERFLÄCHE		95% DELLE PIASTRELLE ESENTI DA DIFETTI VISIBILI 95% OF TILES SHOW NO VISIBLE DEFECTS 95% DES CARREAUX SONT DÉPOURVUS DE DÉFAUTS VISIBLES 95% DER FLIESEN SIND FREI VON SICHTBAREN FEHLERN			
ASSORBIMENTO D'ACQUA WATER ABSORPTION ABSORPTION D'EAU WASSERAUFNAHME	ISO 10545-3	≤ 0,5 %	CONFORME . COMPLIANT CONFORME . ERFÜLLT		
RESISTENZA ALLA FLESSIONE BREAKING MODULUS RESISTANCE A LA FLEXION BIEGEFESTIGKEIT	ISO 10545-4	35 N/mm ²	CONFORME . COMPLIANT CONFORME . ERFÜLLT		
SFORZO DI ROTTURA MODULUS OF RUPTURE CHARGE DE RUPTURE BRUCHLAST	ISO 10545-4	SPESSORE . THICKNESS ≥ 7,5 MM: MIN. 1300 N EPAISSEUR . STÄRKE < 7,5 MM: MIN. 700 N	CONFORME . COMPLIANT CONFORME . ERFÜLLT		
DETERMINAZIONE DELLA RESISTENZA A FLESSIONE E CARICO DI ROTTURA DETERMINATION OF BREAKING MODULUS AND MODULUS OF RUPTURE DÉTERMINATION DE LA RÉSISTANCE À LA FLEXION ET À LA CHARGE DE RUPTURE BESTIMMUNG DER BIEGEFESTIGKEIT UND DER BRUCHLASTBESTÄNDIGKEIT	UNI EN 1339:2005 / COR. 2011 ANNEX F	SPESSORE . THICKNESS EPAISSEUR . STÄRKE 20 MM		SPESSORE . THICKNESS EPAISSEUR . STÄRKE 20 MM	CLASSE U11
RESISTENZA ALLA ABRASIONE DELLA SUPERFICIE DI PIASTRELLE SMALTATE RESISTANCE TO SURFACE ABRASION OF GLAZED TILES RÉSISTANCE A L'ABRASION DE LA SURFACE DES CARREAUX ÉMAILLÉS WIDERSTAND GEGEN ABRIEB DER OBERFLÄCHE DER GLASIERTEN FLIESEN	ISO 10545-6	≤ 175 mm ³	CONFORME COMPLIANT CONFORME ERFÜLLT		
COEFFICIENTE DI DILATAZIONE TERMICA LINEARE THERMAL EXPANSION COEFFICIENT COEFFICIENT DE DILATATION THERMIQUE LINEAIRE WARMEAUSDEHNUNGSKOEFFIZIENT	ISO 10545-8	METODO DISPONIBILE . AVAILABLE ON REQUEST METHODE DISPONIBLE . VERFÜGBARES VERFAHREN			≤ 7x10 ⁻⁶ °C ⁻¹
RESISTENZA AGLI SBALZI TERMICI THERMAL SHOCK RESISTANCE RESISTANCE AUX ECARTS DE TEMPERATURE TEMPERATURWECHSELBESTÄNDIGKEIT	ISO 10545-9	METODO DISPONIBILE . AVAILABLE ON REQUEST METHODE DISPONIBLE . VERFÜGBARES VERFAHREN	RESISTENTI . RESISTANT RÉSISTANTS . WIDERSTANDSFAHIG		
RESISTENZA AL GELO FROST RESISTANCE RESISTANCE AU GEL FROSTBESTÄNDIGKEIT	ISO 10545-12	RICHIESTA . ALWAYS TESTED EXIGÉE . NOTWENDIG	RESISTENTI . RESISTANT RÉSISTANTS . WIDERSTANDSFAHIG		
PRODOTTI CHIMICI AD USO DOMESTICO ED ADDITIVI PER PISCINA HOUSEHOLD CHEMICALS AND SWIMMING POOL WATER CLEANSERS PRODUITS CHIMIQUES COURANTS ET ADDITIFS POUR PISCINE CHEM. PRODUKTE FÜR DEN HAUSHALTSGEBRAUCH UND ZUSATZ FÜR SCHWIMMBÄDER	ISO 10545-13	MIN. UB		UA	
ACIDI ED ALCALI A BASSA CONCENTRAZIONE ACIDS AND LOW CONCENTRATION ALKALIS ACIDES ET ALCALI A FAIBLE CONCENTRATION SÄUREN UND ALKALI IN GERINGER KONZENTRATION	ISO 10545-13	COME DICHIARATO DAL PRODUTTORE AS DECLARED BY THE MANUFACTURER COMME LE DÉCLARE LE PRODUCTEUR WIE VOM HERSTELLER ERKLÄRT	RESISTENTI RESISTANT RÉSISTANTS WIDERSTANDSFAHIG		
ACIDI ED ALCALI AD ALTA CONCENTRAZIONE ACIDS AND HIGH CONCENTRATION ALKALIS ACIDES ET ALCALI A FORTE CONCENTRATION SÄUREN UND ALKALI IN HOHER KONZENTRATION		METODO DISPONIBILE AVAILABLE ON REQUEST METHODE DISPONIBLE VERFÜGBARES VERFAHREN	RESISTENTI RESISTANT RÉSISTANTS WIDERSTANDSFAHIG		
RESISTENZA ALLE MACCHIE STAIN RESISTANCE RESISTANCE AUX TACHES FLECKBESTÄNDIGKEIT	ISO 10545-14	METODO DISPONIBILE . AVAILABLE ON REQUEST METHODE DISPONIBLE . VERFÜGBARES VERFAHREN	RESISTENTI . RESISTANT RÉSISTANTS . WIDERSTANDSFAHIG		
STABILITÀ DEI COLORI ALLA LUCE COLOUR STABILITY TO LIGHT STABILITÉ DES COULEURS A LA LUMIERE LICHTECHTHEIT DER FARBEN	DIN 51094	NON DEVONO PRESENTARE APPREZZABILI VARIAZIONI DI COLORE THEY DO NOT HAVE TO SHOW VISIBLE COLOUR ALTERATION PAS DE MODIFICATIONS SENSIBLES DE COULEUR WEISEN KEINE SICHTBAREN FARBABWEICHUNGEN AUF	CONFORME COMPLIANT CONFORME ERFÜLLT		
COEFFICIENTE DI ATTRITO (SCIVOLOSITÀ) FRICTION COEFFICIENT (SLIP RISK) COEFFICIENT DE FROTTEMENT (GLISSANCE) REIBUNGSKOEFFIZIENT (GLÄTTE)	ENI6165 ANNEX B (DIN 51130) ENI6165 ANNEX A (DIN 51097) D.M. 236/89 B.C.R. ANSI A 326.3:2021	DOVE RICHIESTO IF NEEDED SI DEMANDE NACH ANFORDERUNG		A RICHIESTA AVAILABLE ON REQUEST SUR DEMANDE AUF ANFRAGE	

CERTIFICAZIONI DI PRODOTTO

Product certification



放射性水平 A 类



Tutte le piastrelle sono certificabili MOCA.
All the tiles can be MOCA-certified.
Toutes les carreaux sont certifiées MOCA.
Alle Bodenfliesen sind nach MOCA zertifizierbar.



La Fabbrica S.p.A. si riserva di apportare, senza alcun preavviso, le modifiche che riterrà più opportune al fine di migliorare il prodotto. Quanto riportato è da considerarsi indicativo e non esaustivo in riferimento ai colori e alle caratteristiche estetiche dei prodotti.

La Fabbrica S.p.A. reserves all rights to make any appropriate changes in order to improve the product, without any prior notice.

All images are provided for illustrative purposes only and are not limited in reference to colours and aesthetic features of the products.

Le cromie, le strutture e le grafiche delle piastrelle riprodotte nelle immagini del catalogo potrebbero non corrispondere fedelmente al prodotto industriale.

The colours, structures and patterns of the tiles illustrated in the catalogue might not correspond exactly to the actual product.

Eventuali differenze di tono fanno parte del prodotto e rientrano nel range di stonizzazione.

Any eventual difference of shade is part of the product and falls within the color shading range.

CONSULTARE IL CATALOGO GENERALE 2023 PER LA SEZIONE TECNICA, LE INDICAZIONE DI PULIZIA E MANUTENZIONE E LE CONDIZIONI DI VENDITA GENERALE.

CHECK OUT THE GENERAL CATALOGUE 2023 FOR THE TECHNICAL SECTION, IMPORTANT PRODUCT CLEANING AND MAINTENANCE ADVICE AND GENERAL SALES TERMS AND CONDITIONS.

CONSULTA IL SITO WWW.LAFABBRICA.IT PER VEDERE GLI ULTIMI AGGIORNAMENTI.

CHECK OUT OUR WEBSITE AT WWW.LAFABBRICA.IT FOR THE LATEST UPDATES.

AD: **MARKETING LA FABBRICA**

PRINT: **bBold s.r.l.**

EDIZIONE I - SETTEMBRE 2023



La Fabbrica S.p.A.
Via Emilia Ponente, 2070
48014 Castel Bolognese (RA) Italy
Tel. +39 0546 - 659911 - Fax +39 0546 - 656223
www.lafabbrica.it
info@lafabbrica.it

A company part of



FOLLOW US

